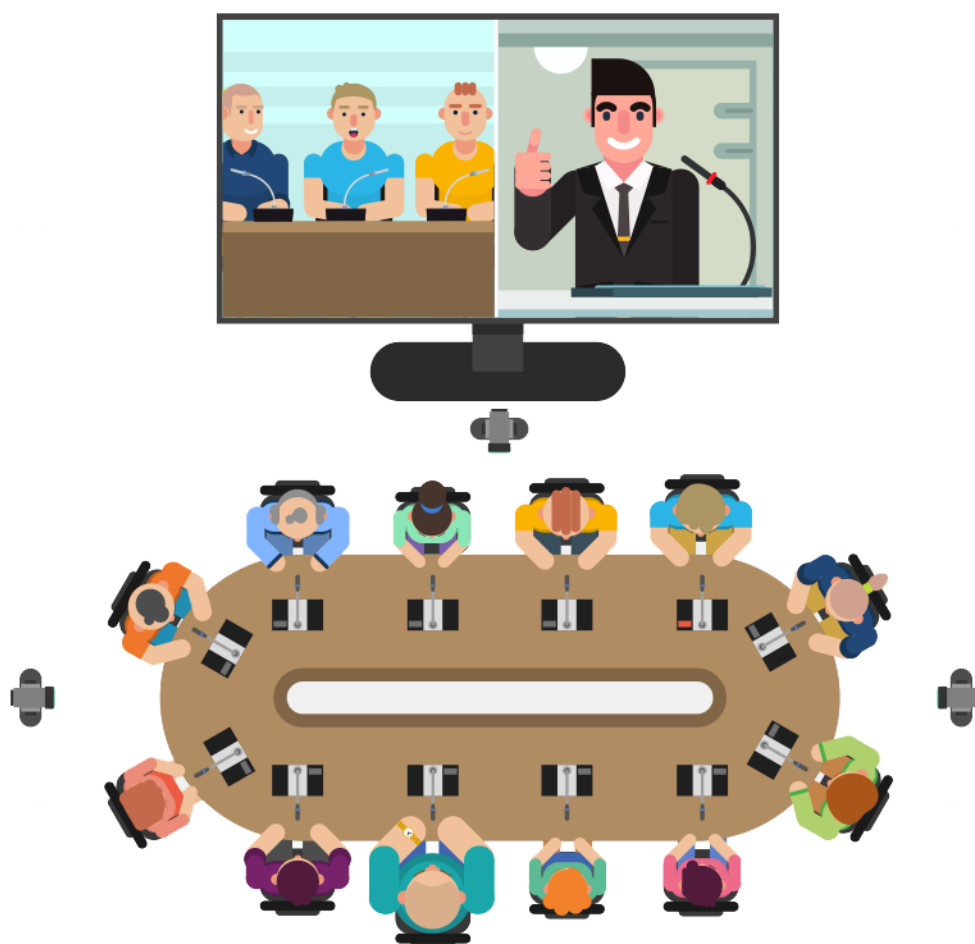




TrueConf Weathervane

BOSCH CSS 1000D setting*



* for information purposes only

© 2010-2019 TrueConf LLC. All rights reserved.

<https://trueconf.com>

Table of contents

Discussion System Setup	3
Connecting BOSCH CCS 1000 D to Your Computer	4
System Detection	4
Setting the Discussion System via Browser	6
Connecting to TrueConf Weathervane	7

[TrueConf Weathervane 4](#) can be integrated with [BOSCH CCS 1000 D](#) Digital Discussion System and allows automatic speaker tracking using PTZ camera during conferences.

Read our guide to learn how to connect BOSCH CCS 1000 D to your computer and setup interaction with TrueConf Weathervane.¹

Discussion System Setup

BOSCH CCS 1000 D Discussion System consists of the control unit, microphone console, and web interface to be setup via the browser once connected.



BOSCH CCS 1000 D Digital Discussion System

¹ This guide is for informational purposes only. In practice, additional steps may be required depending on some technical aspects.

For more information on how to setup this discussion system, [contact the manufacturer](#).

Control unit is the main system device. Thanks to the control unit, the discussion system connects to Ethernet, while users can manage microphone settings and control conference process



Control Unit

Connecting BOSCH CCS 1000 D to Your Computer

Connect BOSCH CCS 1000 D to Ethernet via the connector on the rear panel of the control unit.

Connect the computer which will be used to manage the discussion system to the same network.

System Detection

Since the computer and BOSCH are connected to the network independently, your computer needs to detect the IP address to connect to the BOSCH, i.e. “detect” the system on the network.

There are several options to initiate such a search.

Option 1

Use *BOSCH DNS-SD Driver* software. It's available for download on the BOSCH official website:

<https://licensing.boschsecurity.com/software/html/load.htm?1000>

Following the link above, find the lines starting with

Windows PC DNS-SD driver to discover CCSD-CU on hostname and install the version suitable for your operating system (**x32** or **x64**).

Once the installation is complete, open the command prompt (press **Win+R** and run **cmd**) and enter the following command:

ping ccs1000d.local

The system IP address will be available below the command.

Option 2

Use *Advanced IP Scanner* software.

<https://www.advanced-ip-scanner.com/>

Download the program, launch the scanning and once the process is over, find *BOSCH Security System BV* among the devices. The required *IP* address will be displayed in the IP column.

Option 3

Use a traffic analyzer program (e.g. [Wireshark](#)) and detect the IP address by identifying the device by its MAC address.

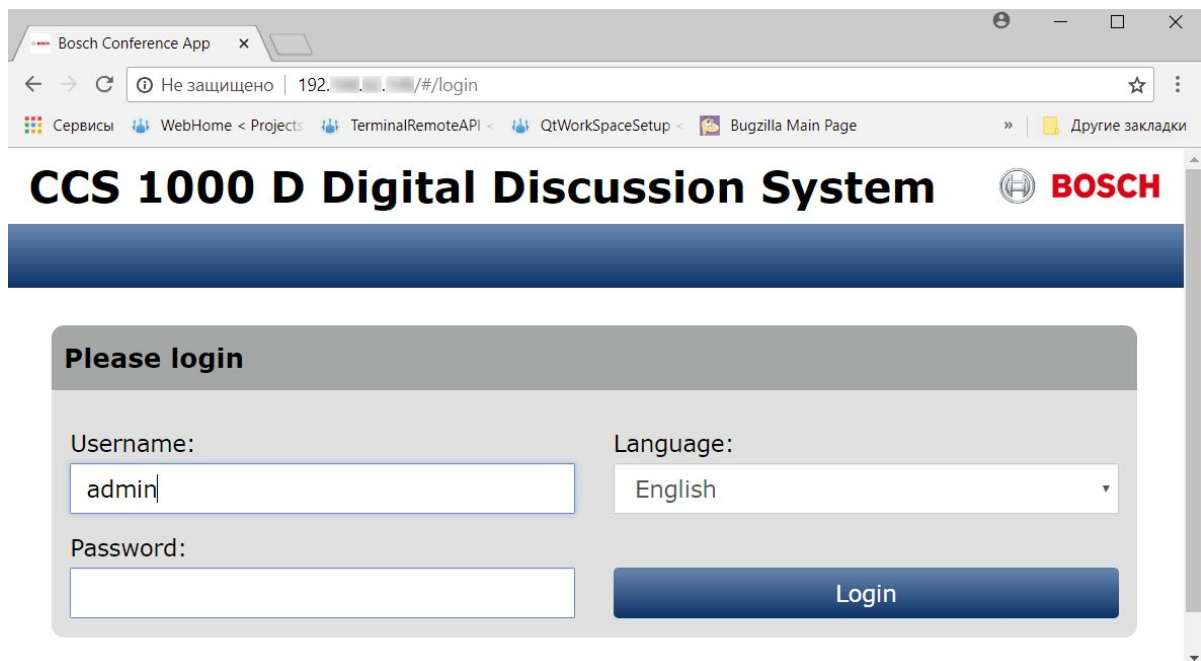
The MAC address of the discussion system is labeled on the back of the control unit.

If you did not manage to find the IP address with the options listed above, connect the discussion system to the computer via the Ethernet cable directly.

Setting the Discussion System via Browser

Once the IP address is detected (see the previous section), open the control panel of the discussion system. To that end, enter the IP in the browser's address bar.

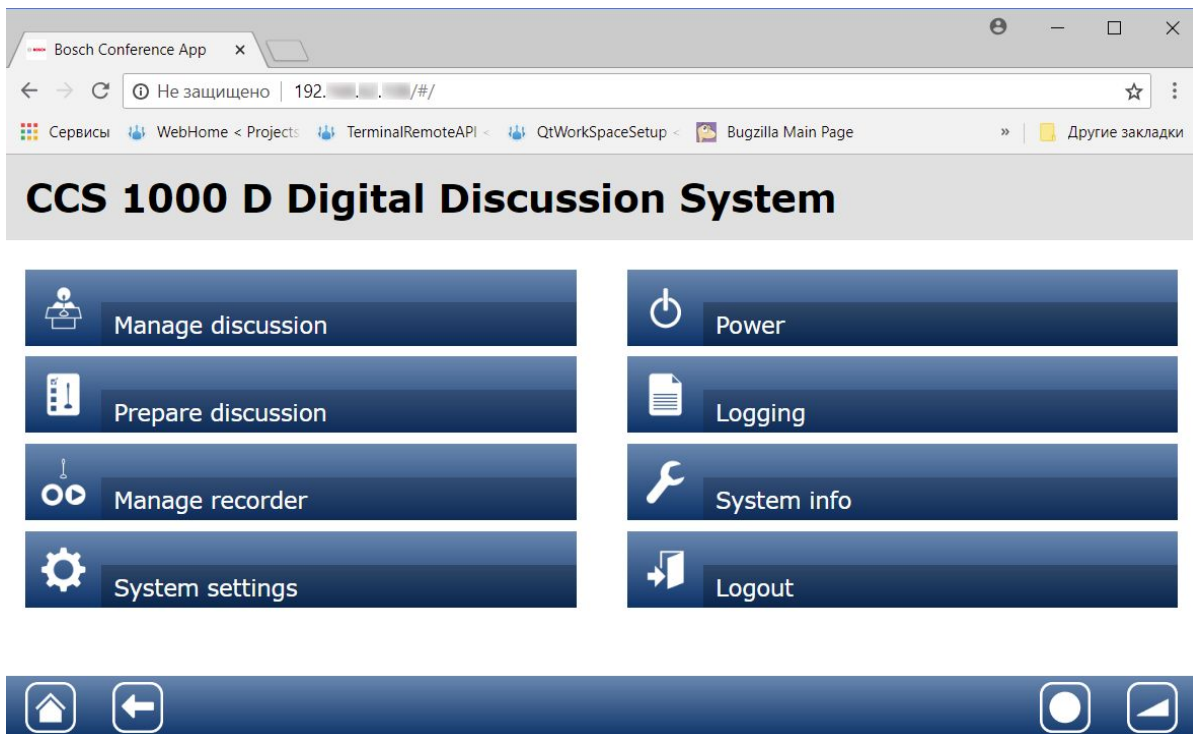
The authorization page will open. Enter **admin** as your default username and leave the password blank.



Authorizing in BOSCH CCS 1000 D Web Interface

Once logged in, the main menu will open. Here you can select the necessary settings section:

- **Prepare discussion:** setup conference parameters;
- **System settings:** change the IP address;
- and more.



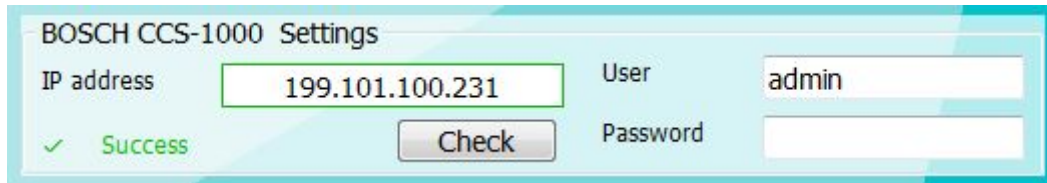
Main Menu of the BOSCH CCS 1000 D Web Interface

Connecting to TrueConf Weathervane

In TrueConf Weathervane settings window (**Tools**→**Settings** menu item), select **BOSCH CCS 1000** in **Conference System** section.

Below there are BOSCH parameter fields: system IP address and authorization data (if you haven't changed the system username and password when setting up via browser, enter **admin** as your username and leave the password blank).

Click **Check** below the IP input field to make sure the application is connected to the conference system.



The image shows a screenshot of a software interface titled "BOSCH CCS-1000 Settings". It features several input fields and a button. The "IP address" field contains the value "199.101.100.231". The "User" field contains the value "admin". The "Password" field is empty. A green checkmark and the word "Success" are displayed, indicating a successful connection. A "Check" button is positioned below the IP address field.

Field	Value
IP address	199.101.100.231
User	admin
Password	

✓ Success

Check