



TrueConf MCU 1.3 Update

SIP & H.323 are Back in the Game

July 8, 2021
2:00 PM UTC (10:00 AM EDT)

Audio Streams Management for Simultaneous Interpreting

The interface displays a 'List of channels' sidebar on the left with three options: 'Default channel', 'EN', and 'RU'. The 'RU' channel is selected and highlighted. The main content area is titled 'RU' and is divided into two sections: 'Attendees (3/13)' and 'Presenters (1/13)'. Each section has an 'Add' button and a search bar labeled 'Search for participants'.

Attendees (3/13)

<input type="checkbox"/>	Participant's name	Address	Actions
<input type="checkbox"/>	Amanda White	rtsp:b1.dnsdojo.com:1935/live/sys1.stream	✗
<input type="checkbox"/>	Ethan Nelson	sip:00sym@10.130.0.32 h323:00sym@10.130.0.32	✗
<input type="checkbox"/>	Kathryn Floyd	sip:00sym@80.91.181.219 h323:00sym@80.91.181.219	✗

Presenters (1/13)

<input type="checkbox"/>	Participant's name	Address	Actions
<input type="checkbox"/>	Margaret Taylor	sip:10.110.0.226:10011	✗

VNC Streaming



Connecting a participant ✕

VNC ▾

Enter an endpoint address
vnc://user:pass@host[:port]

Display name

Cancel Connect

- For desktop sharing
- In a layout or as a content stream

Uploading Media Files to Conferences

Meeting interface showing controls and participants.

Meeting controls: Layout settings, Mute, Unmute, Video, Chat, End conference.

Participants: 12/20

Search for participants

<input type="checkbox"/>	Participant's name and address	Settings	Additional
<input type="checkbox"/>	oldschool.jpg file:1@opt/trueconf/mcu/var/IL...		
<input type="checkbox"/>	mcu.mp4 media:1@opt/trueconf/mcu/va...		

Content sharing interface.

Content sharing

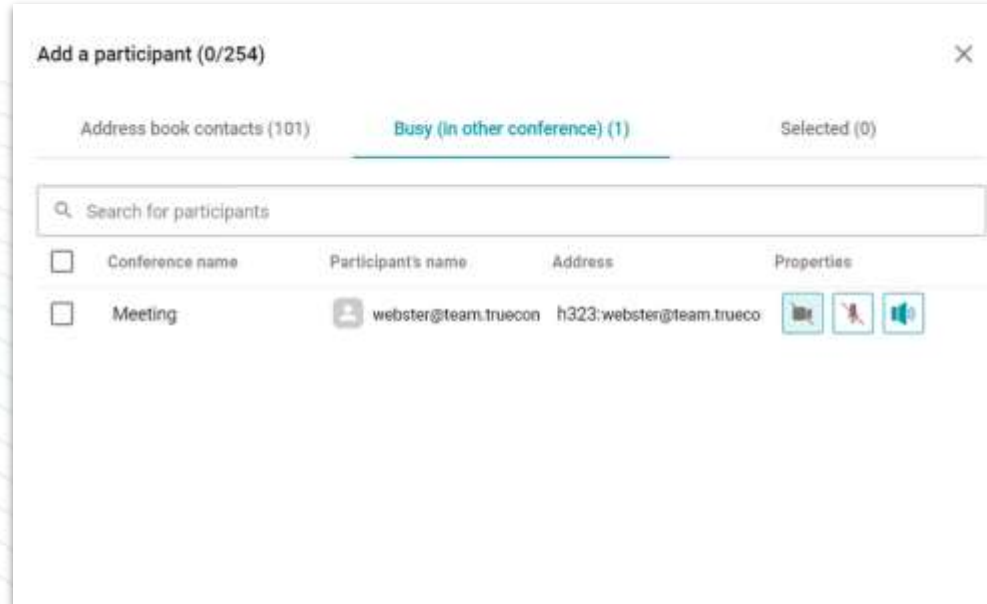
Primary stream Secondary stream

The media files will be displayed in the general layout.

Upload a file

<input type="checkbox"/>	File name	Actions
<input type="checkbox"/>	Jellyfish_720_10s_30MB.mp4	
<input type="checkbox"/>	Big_Buck_Bunny_720_10s_30MB.mp4	
<input type="checkbox"/>	Sosuli 720P_30.mkv	
<input type="checkbox"/>	mcu.mp4	
<input type="checkbox"/>	oldschool.jpg	

Waiting Room



- Move participants between video conferences
- Save your settings when switching between sessions

New Overlay Layouts



Flexible layouts

Enable overlay view

Number of [icon] s [dropdown]

Video area pre [icon]

A screenshot of a software interface for flexible layouts. It features a title bar "Flexible layouts" and a checked checkbox "Enable overlay view". Below this is a row of four grid icons, with the first one highlighted in teal. A dropdown menu is open under the second icon, showing a grid icon and a text input field. Below the grid icons are two text input fields: "Number of [icon] s [dropdown]" and "Video area pre [icon]".

Dedicated Layouts for Recording & Streaming

The screenshot displays a user interface for configuring layouts. On the left, a sidebar titled "List of layouts" contains three sections: "For all participants", "Default layout", and "Recording and streaming". The "Recording and streaming" section is highlighted in teal. The main area is titled "Recording and streaming" and features a teal header bar. Below the header, a message states: "This layout will be used for recording and streaming". Two tabs are visible: "General layout" and "Content layout", with "Content layout" being the active tab. A toggle switch is turned on, labeled "Enable the content layout", with a sub-note: "The layout will be enabled automatically if one of participants starts sharing content". Below this, a "Layout type" dropdown menu is set to "Flexible". A section titled "Flexible layouts" contains an unchecked checkbox for "Enable overlay view". At the bottom, a horizontal toolbar shows several layout icons, with the first icon (a 2x2 grid) highlighted in teal.

Display Name Styles

Enable custom settings

Display name style _____

Participants' names _____
Always display

Font _____ Size _____
Select Automatically Auto

Font color

Text alignment

Display name background

Display name position _____

Auto

Width: _____
0 50 100

Vertical alignment: _____
0 50 100


Preview



Remote Control via DTMF

Webinar

Tone dialing (DTMF) ✕



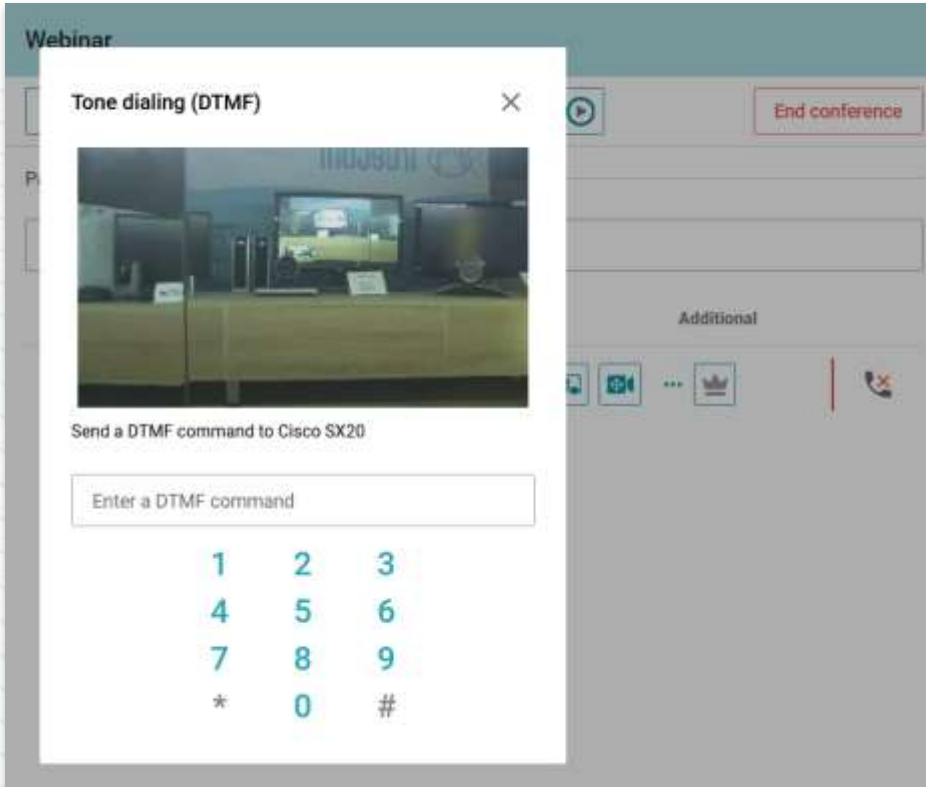
Send a DTMF command to Cisco SX20

Enter a DTMF command

1	2	3
4	5	6
7	8	9
*	0	#

End conference

Additional




Customized Avatars in the Address Book

- Layout window customization
- Participant placeholders if camera is disabled

General Groups Additional

Username
James Wolf

Display name
James Wolf



Select an address type

SIP / H.323

IP camera

VNC

SIP
sip:368975@team.trueconf.com
sip:[username@]host[:port]

H.323
sip:368975@team.trueconf.com
h323:[username@]host[:port]

UltraHD Video Conferencing

Video settings

Maximum frame size

3840x2160 30 FPS (16:9)

Video bitrate (kbps)

8192

Scaling mode

Auto

Avatar display options

Use default settings

Video codecs



h.261



h.264-high



h.264



h.263



h.265

TrueConf Community on Telegram

https://t.me/trueconf_chat



TrueConf Community



t.me/trueconf_chat

✓ News channel:
https://t.me/trueconf_official

? Instructions, manuals, and helpful articles:
<https://trueconf.com/blog/knowledge-base>

🎬 Video guides:
<https://www.youtube.com/c/TrueConfVideoConferencing/>

! Community rules:
https://t.me/trueconf_chat/4

Thank you!

Follow our latest updates

<https://trueconf.com/blog/>

Lev Yakupov,
Marketing Director
lyakupov@trueconf.ru



TrueConf Group



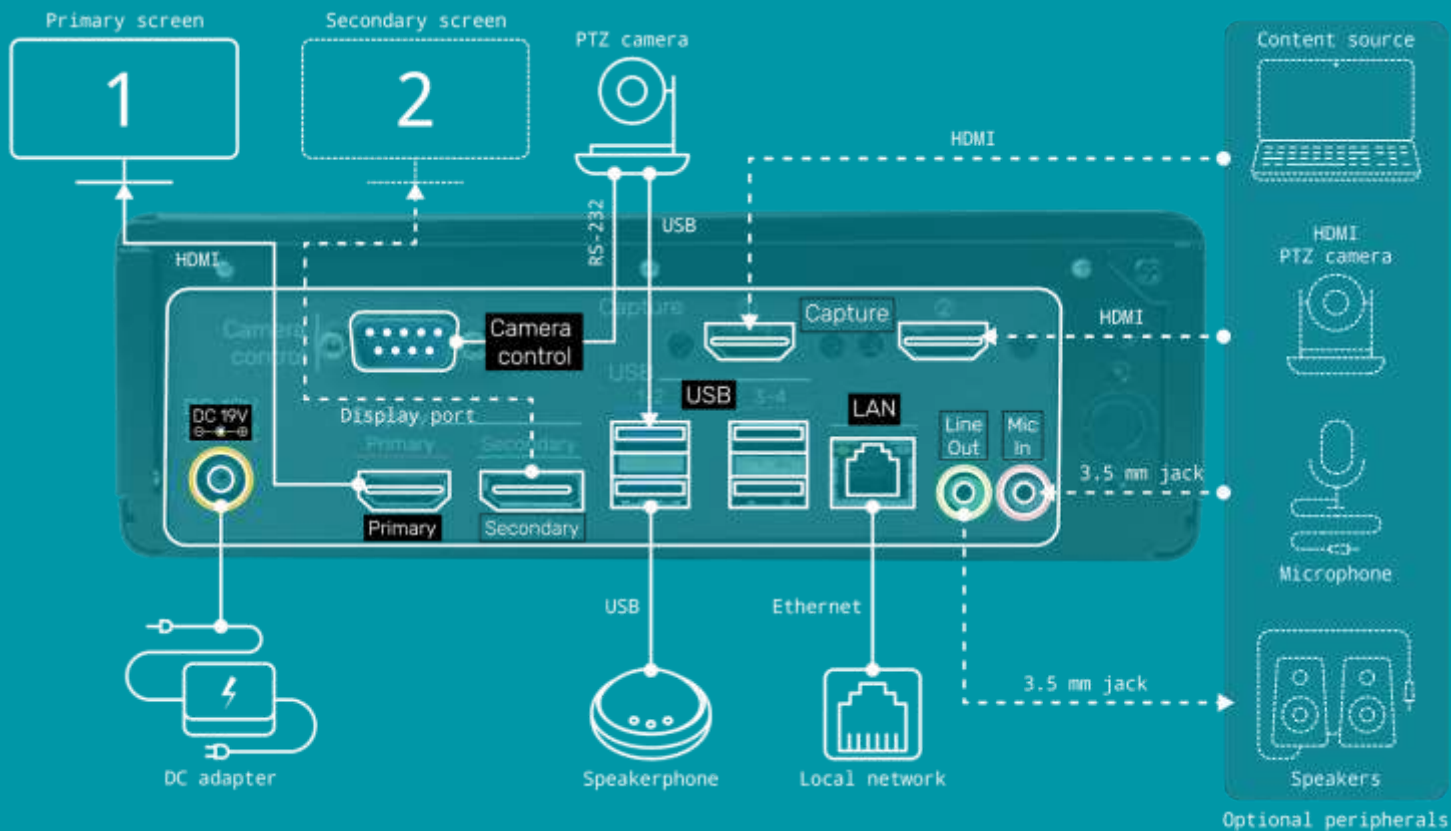
New x86 Endpoint



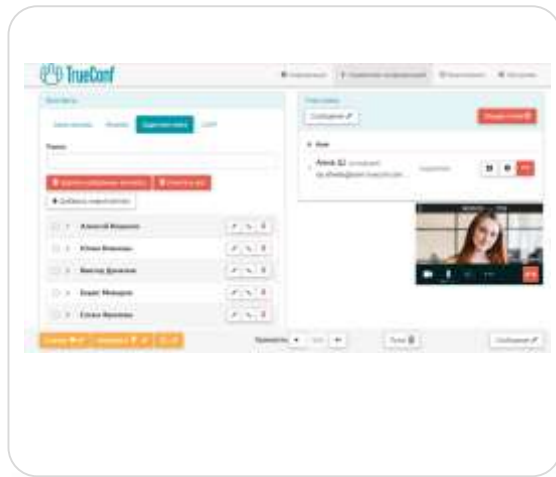
- Ready-to-use H.323 / SIP endpoint:
 - Bundles for small, medium and large rooms
 - Can be used in integration projects.
- Video quality up to 1080p60
- Fully compatible with legacy equipment
- Dual screen support and content sharing
- Built-in MCU for up to 8 sites
- Compatible with popular USB peripherals.



TrueConf Group



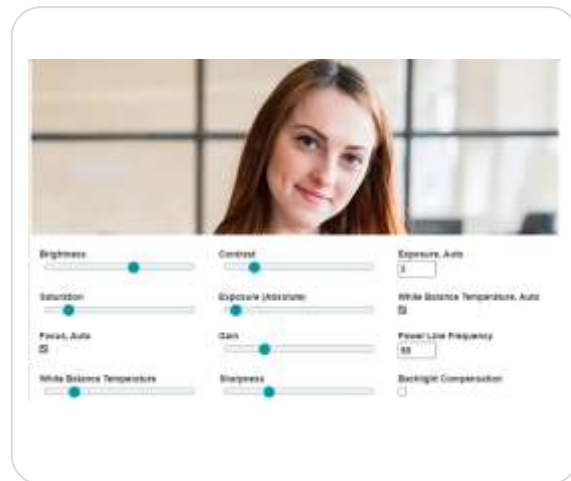
TrueConf Group 5.7 Update



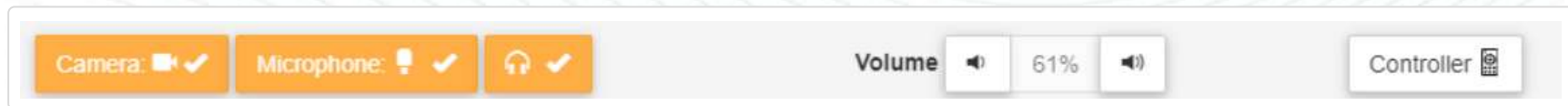
Unified call management section



Viewing ongoing meeting details



Advanced camera settings

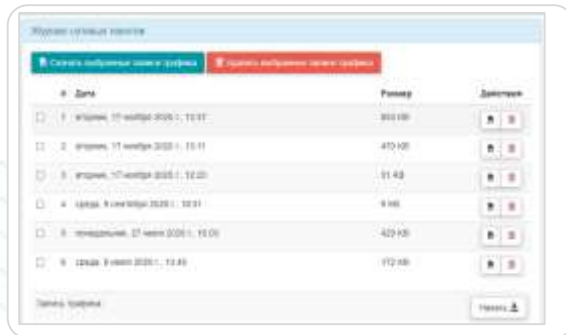


Peripheral control panel

TrueConf Group 5.7 Update



On-screen remote control



Network monitoring tool



Availability check



Power button settings



New remote control